

INSTALLATION GUIDE

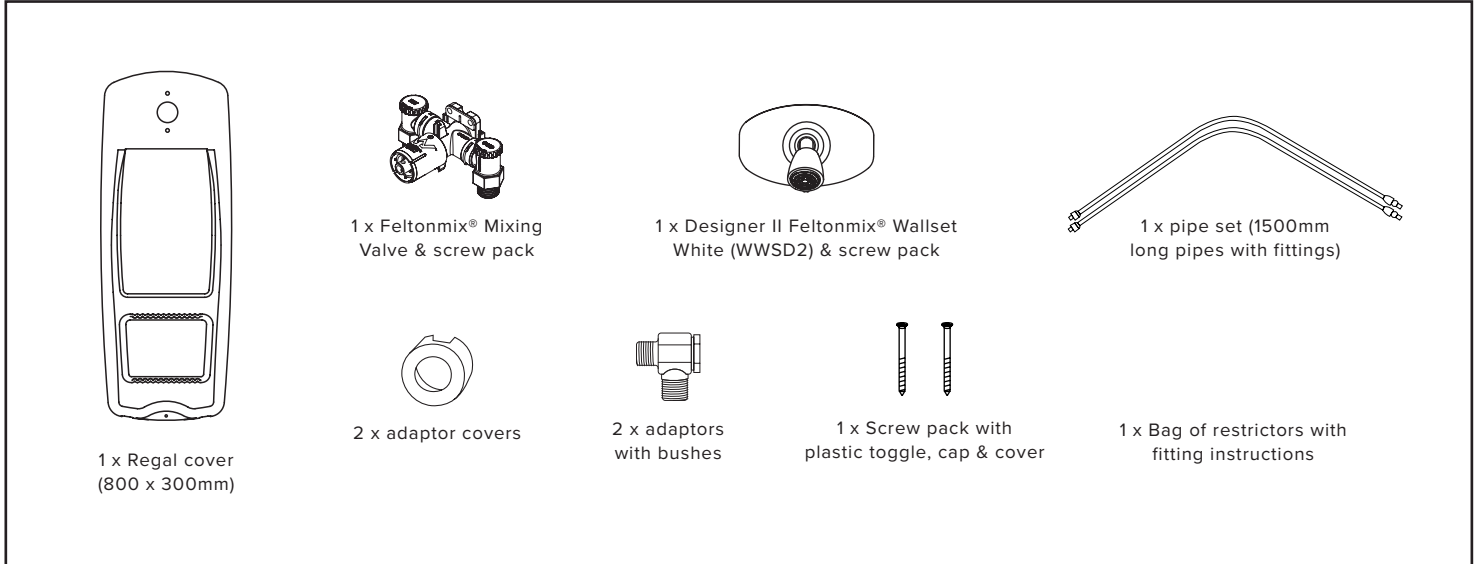
FELTON

REGAL OVER THE BATH SHOWER UNIT RW | RWE | RWH

REGAL OVER THE BATH SHOWER UNIT

The Regal is designed to convert an existing bath into a bath/shower. It attaches to existing taps and requires only the simplest of tools.

WHAT IS IN THE PACK



For technical assistance please ring
NZ 0800 743 358 or (09) 528 0810 | AUS 1800 798 760

INSTALLATION INSTRUCTIONS

1. Turn off the water at the mains. Remove bath taps and re-install with tap adaptors and covers fitted behind them. Adaptors are provided with a bush to accommodate $\frac{3}{4}$ " or $\frac{1}{2}$ " BSP threads. Seal threads with Ceelon thread tape.
2. Mount shower mixing valve on wall at desired height (not exceeding 1500mm above taps). Add an additional 5-6mm to the calculated pipe length to allow for bends to reach taps.
3. Connect pipes between shower valve isolators and bath tap adaptors. Fit white sleeve at bottom of pipe using long nuts. Connect hot water to red shower valve isolator, cold water to blue. If hot and cold water pipes are reversed, turn shower valve through 180° and rotate isolators to point downwards.
4. Check that there are no leaks to shower valve by closing isolators and turning on mains. Test further for leaks as follows:
 - a. Fit shower handle and turn anticlockwise to OFF position.
 - b. Turn on isolators. All joints must be watertight.
5. To complete installation of shower valve,
 - a. Remove shower handle.
 - b. Remove protective plastic film from Regal cover and fit it and the wallplate to shower valve.
 - c. Fit handle and screw in shower head.
 - d. Attach base of Regal cover using screw, cap and cover supplied. Use plastic toggle if fastening to wallboard, brick or block.
6. For Mains Pressure fit white restrictor using tool as directed into stem of showerhead.

