

INSTALLATION GUIDE

FELTON

TATE WALL MOUNTED SPOUT

SYSTEM REQUIREMENTS

To ensure the optimum performance and customer satisfaction please adhere to the following:

- Flush out all pipe work prior to installation.
- Installation should comply with relevant local authority requirements.
- Installation must be carried out by a registered plumber in accordance with AS/NZS 3500, the New Zealand Building Code and Felton instructions.
- Inspection and maintenance must be carried out in accordance with Felton instructions to ensure ongoing performance and compliance.

Operating Pressures

MAXIMUM	1500kPa
MINIMUM	N/A



Failure to comply with the above will void warranties

BUILDING PRODUCT INFORMATION REQUIREMENTS (BPIR)

RELEVANT BUILDING CODE CLAUSES & CONTRIBUTIONS TO COMPLIANCE

This product is Watermarked under license **WM25208 - Tapware (Lead free) AS 3718: 2021**

B2 - Durability

B2.3.1 (c) applies (performance of building elements)

Proof of durability – Service history: Felton products have been installed and used in NZ for the last 50 years and warranty calls are at a minimum and within the quality principles of Felton.

Products that are WaterMark certified are subject to endurance testing.

F2 - Hazardous building materials

F 2.3.1 applies (performance)

Products in contact with drinking water is tested to AS/NZS 4020 (ensures acceptance levels of contaminants for human consumption). Compliance with Lead Free and DR Lead Free requirements where applicable.

G12 - Water Supplies

G12.2 applies (materials)

Felton products in contact with drinking water are tested to AS/NZS 4020, ensuring no water contamination and compliance with Lead Free and DR Lead Free requirements where applicable.

G12.3.2 applies (contamination of water)

All Felton products are designed, manufactured and inspected/tested, that are WaterMark certified, are subject to contamination of water testing (AS/NZS 4020). Compliance with Lead Free requirements where applicable.

G12.3.5 applies (performance)

Felton sanitary fixtures intended for utensil washing and personal washing, showering, or bathing are designed to be connected to a hot water supply and tested to AS/NZS 4020, ensuring suitability for potable water, non-contamination, and compliance with the performance requirements of NZ Building Code G12.

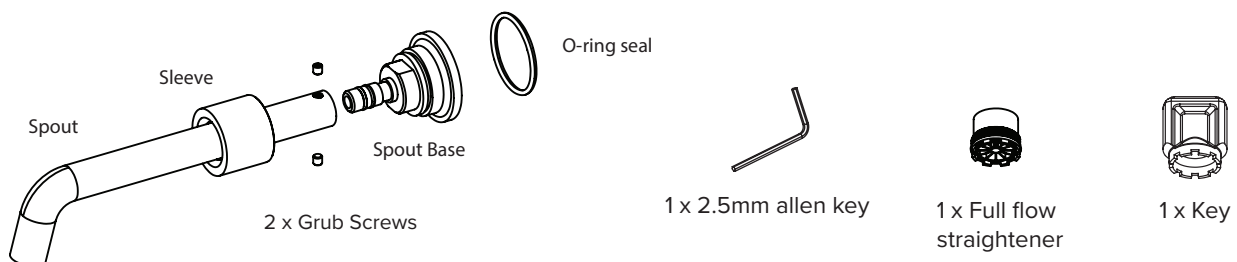
G12.3.7 (c) applies (flow rates)

All Felton products are designed, manufactured and inspected/tested, that are WaterMark certified, are subject to flow rates testing that is within the limitation set by the AS/NZS 3500 (NZBC) and the WELS regulations.

G12.3.10 applies (performance)

Felton water supply taps are designed to be accessible and operable, including for people with disabilities, when installed in accordance with Felton's instructions, supporting compliance with the accessibility requirements of the NZ Building Code.

WHAT'S IN THE PACK



IF INSTALLED AS A BASIN/SINK SPOUT...

IF INSTALLED AS A BATH SPOUT...

MAINS	EQUAL LOW/UNEQUAL (applies to NZ only)
Install product as supplied	Remove aerator from the spout and replace with a full flow straightener using the key provided.

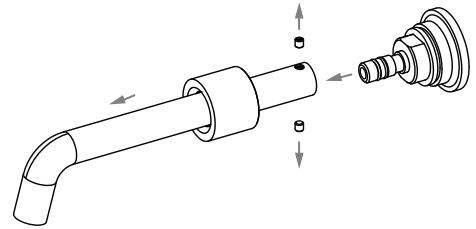
Remove aerator from the spout and replace with a full flow straightener using the key provided.

HOW TO INSTALL

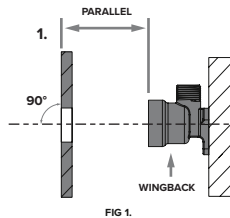
1. Unscrew and remove the cover sleeve, ensuring that it stays on the spout.

Loosen the 2x grub screws, using a 2.5mm allen key.

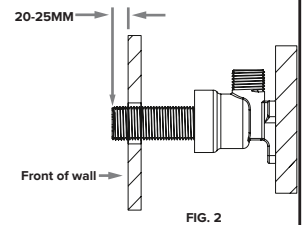
Remove the spout from the spout base.



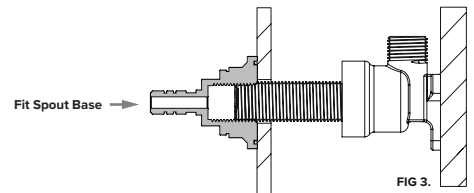
2. Ensure the wingback when fitted is parallel and square to the finished wall lining as shown (fig. 1).



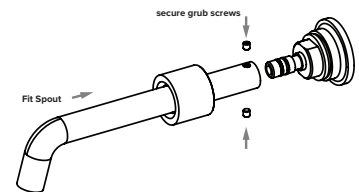
- 2A. Measure and cut 1/2" BSP thread to the desired length **keeping 20-25mm clearance from the wall for the spout connection (use fig 2 as reference).**
- 2B. After applying the appropriate sealer to the thread, hand tighten the 1/2" BSP thread into the wingback.



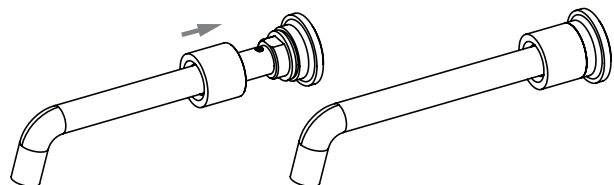
- 3A. Fit the spout base onto the 1/2" BSP thread.
Check the o-ring is in place and thread the flange of the bath spout onto the 1/2" BSP.
- 3B. Ensure the base fits tightly and firmly against the wall and seals.



- 4A. Fit the spout onto the base, ensuring the sleeve stays on the spout and secure both grub screws using the 2.5mm allen key.



- 4B. Screw on the cover sleeve onto the spout base.
5. Turn on the water supply, operate the mixer and check for leaks.



For technical assistance please ring
 NZ 0800 743 358 or (09) 528 0810 | AUS 1800 798 760