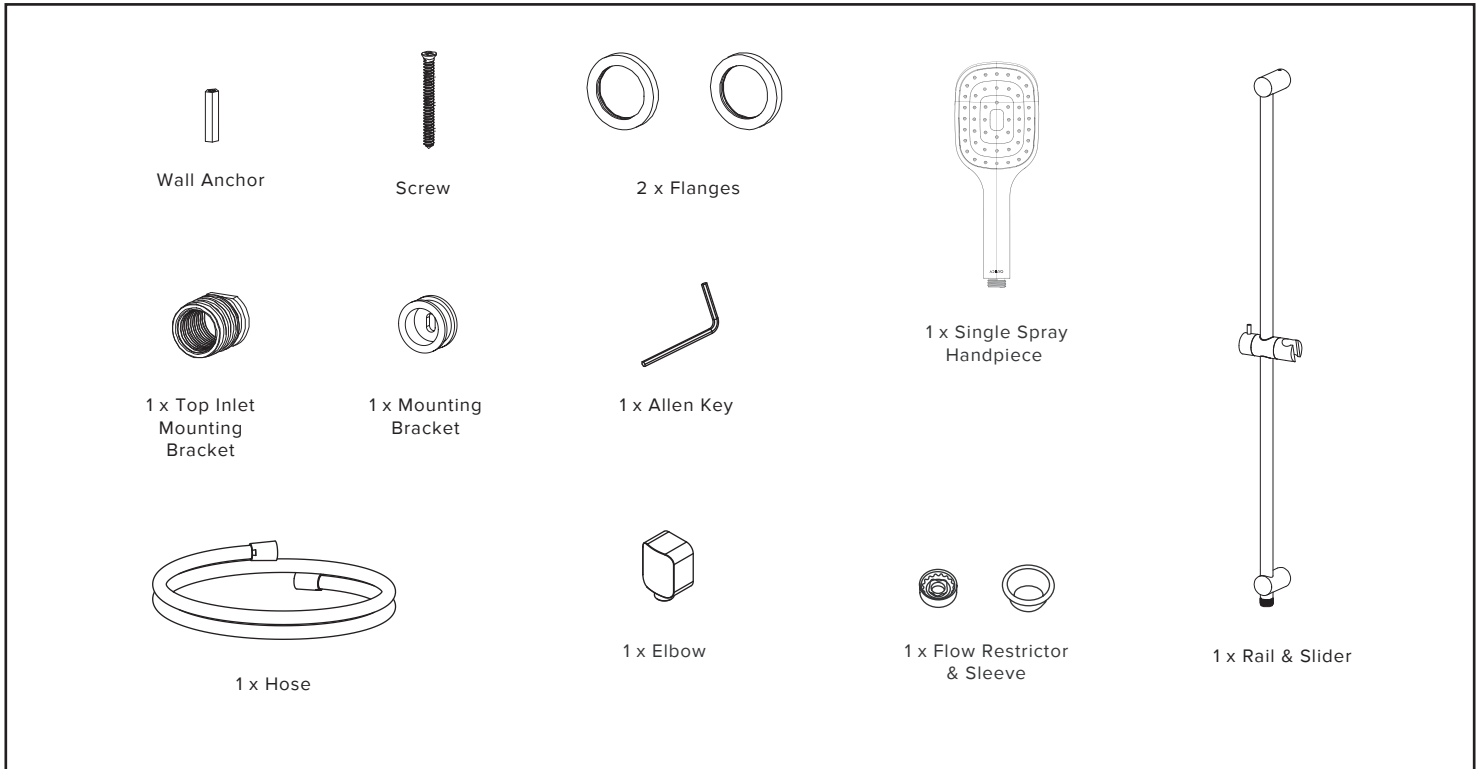


# INSTALLATION GUIDE

## SOL SINGLE SPRAY SLIDE SHOWER

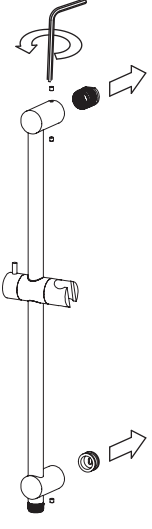
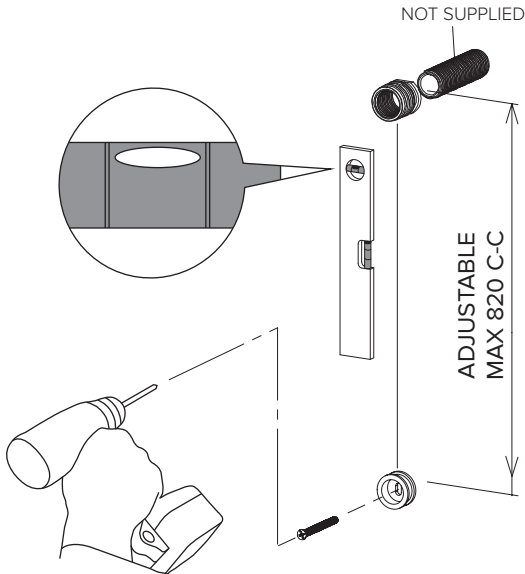
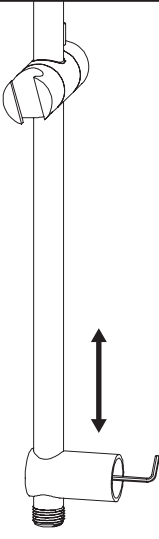
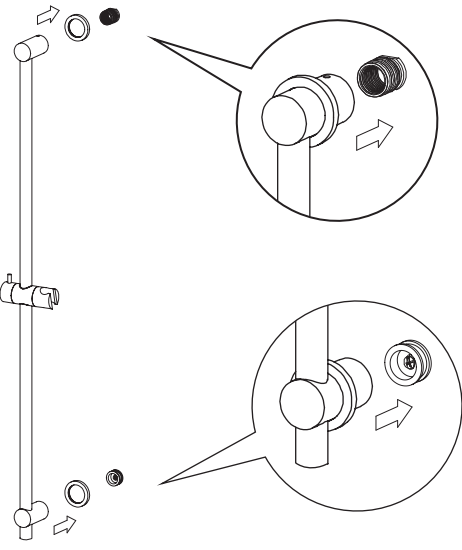
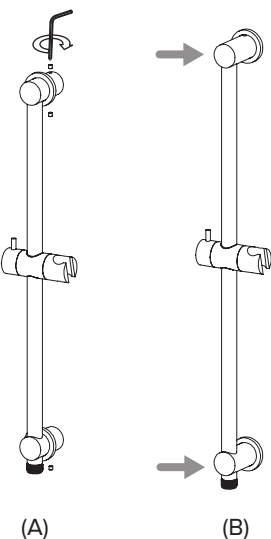
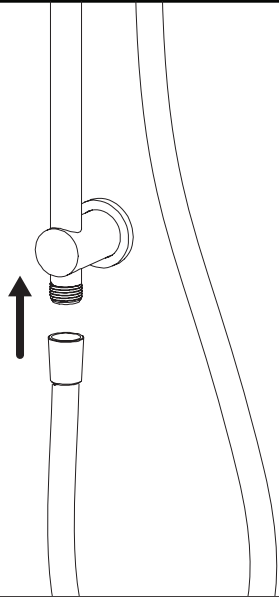
ACCESSO

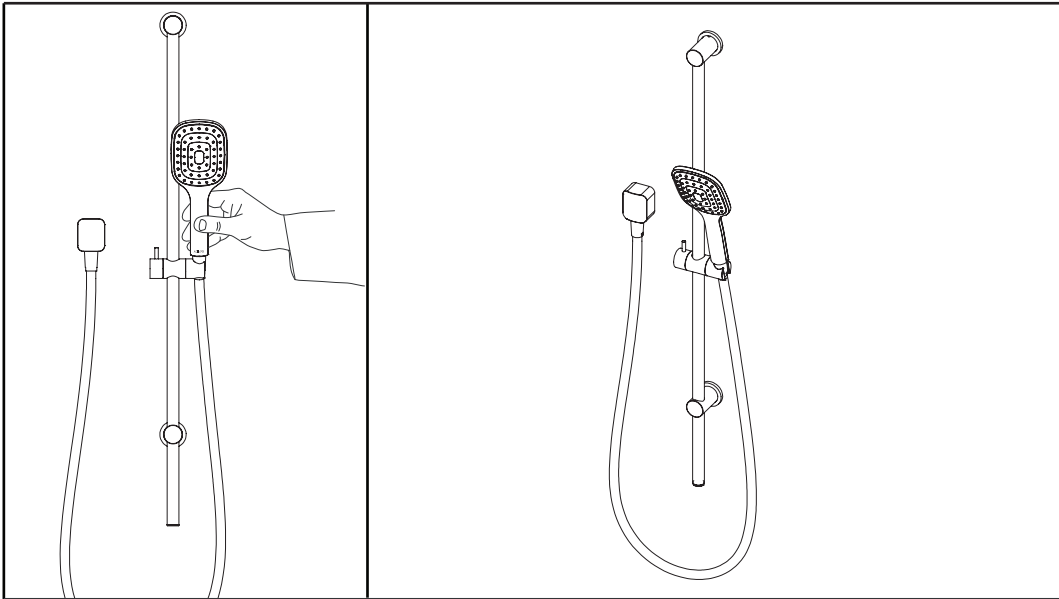
### WHAT IS IN THE PACK



**HOW TO INSTALL**

**INSTALLING INTO STUD/NOG...(RECOMMENDED)**

	 <p>NOT SUPPLIED</p> <p>ADJUSTABLE MAX 820 C-C</p>	
<p><b>1.</b> Untighten the grub screws from the top and bottom of the rail with a 2.5mm allen key and remove the brackets.</p>	<p><b>2.</b> Screw the Top Inlet Mounting Bracket onto the water outlet. Sealant is required on thread to achieve a water tight seal. Mount the brackets into the desired position on the wall (adjustable MAX 820mm c-c), ensuring that they are in the correct orientation.</p>	<p><b>3.</b> Adjust the bottom bracket on the rail, using a 2.5mm allen key to loosen and tighten the grub screw inside the back of the bracket.</p>
	 <p>(A) (B)</p>	
<p><b>4.</b> Fit the flanges over both brackets of the rail. Then mount the rail onto the brackets in place. Ensure that both rail and bracket are secured.</p> <p>It is recommended that silicone sealant be used to seal the fixing brackets.</p>	<p><b>5.</b> Tighten the grub screws on the rail with an allen key (A). Push the flanges firmly against the wall (B).</p>	<p><b>6.</b> Fit the hose onto the bottom end of the rail.</p>



7. Screw the elbow into the water outlet (wingback). Sealant required on thread to achieve a water tight seal.

**For Mains Pressure, fit flow restrictor into the handpiece first.** Screw the hose onto the elbow and handpiece and attach the handpiece to the slider on the rail.

### INSTALLING INTO CONCRETE/BRICK WALL...

Pre-drill holes to the desired position (adjustable maximum 820mm c-c) and fit the wall anchors then follow the above instructions.

